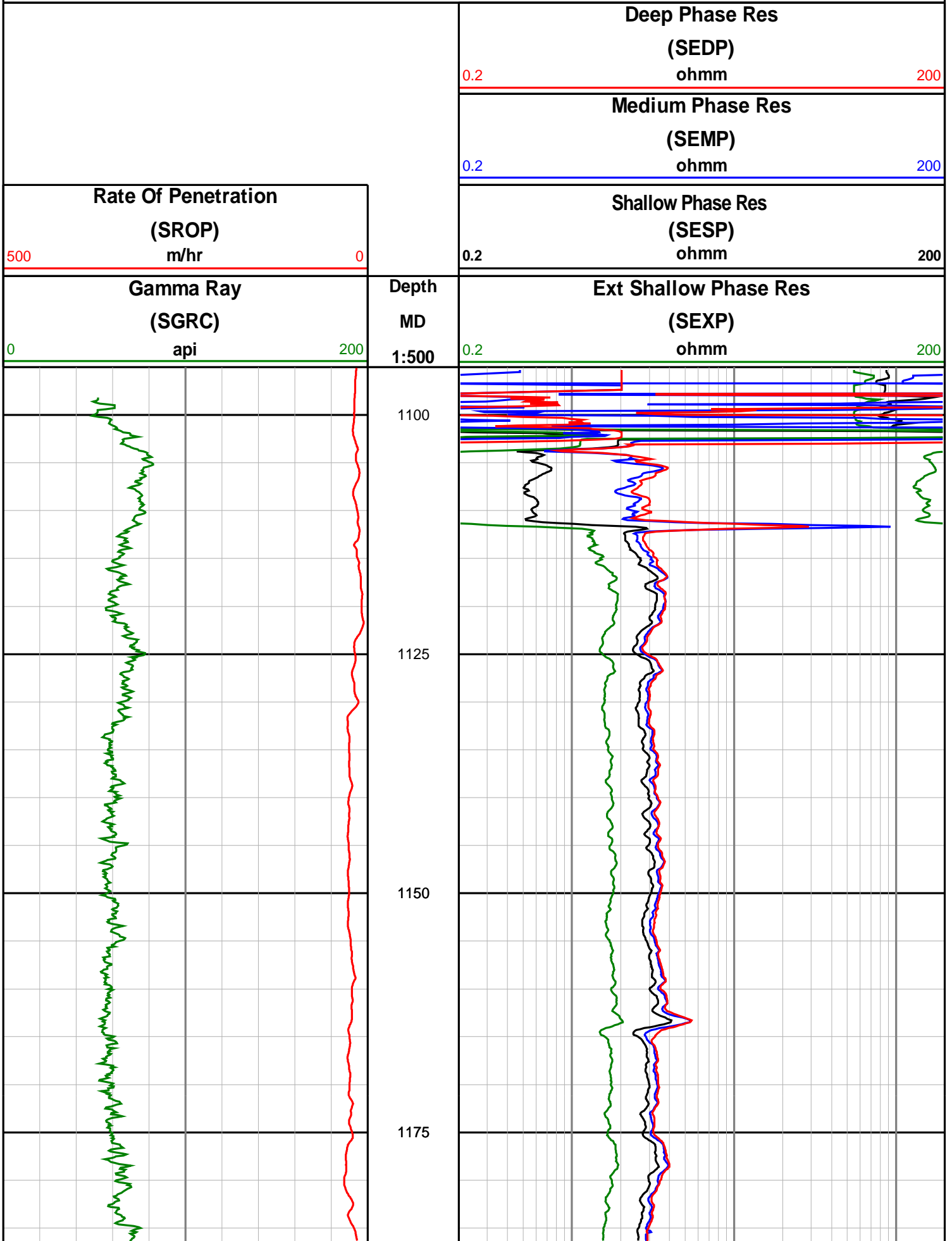


Anzon Australia Ltd

Basker-3

Realtime LWD Log (Permanent Datum - LAT)





1200

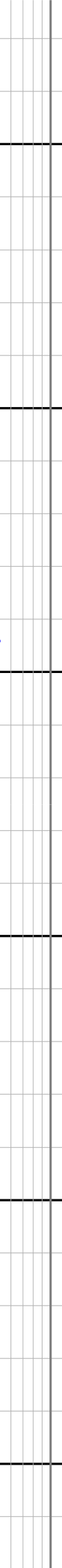
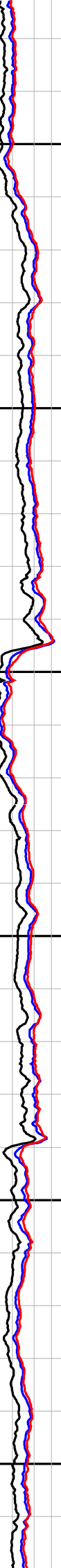
1225

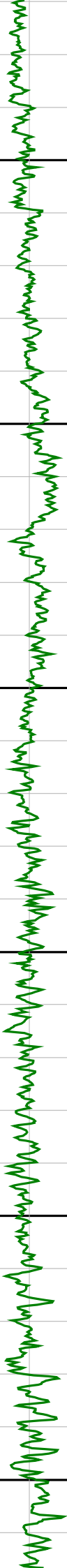
1250

1275

1300

1325





1350

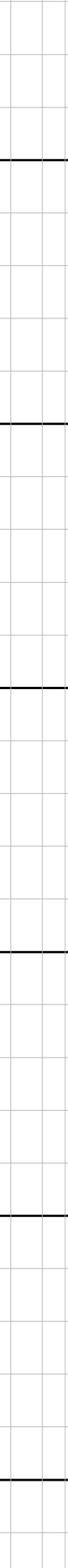
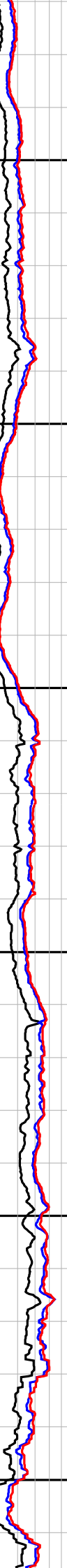
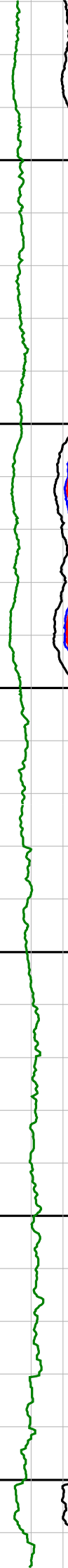
1375

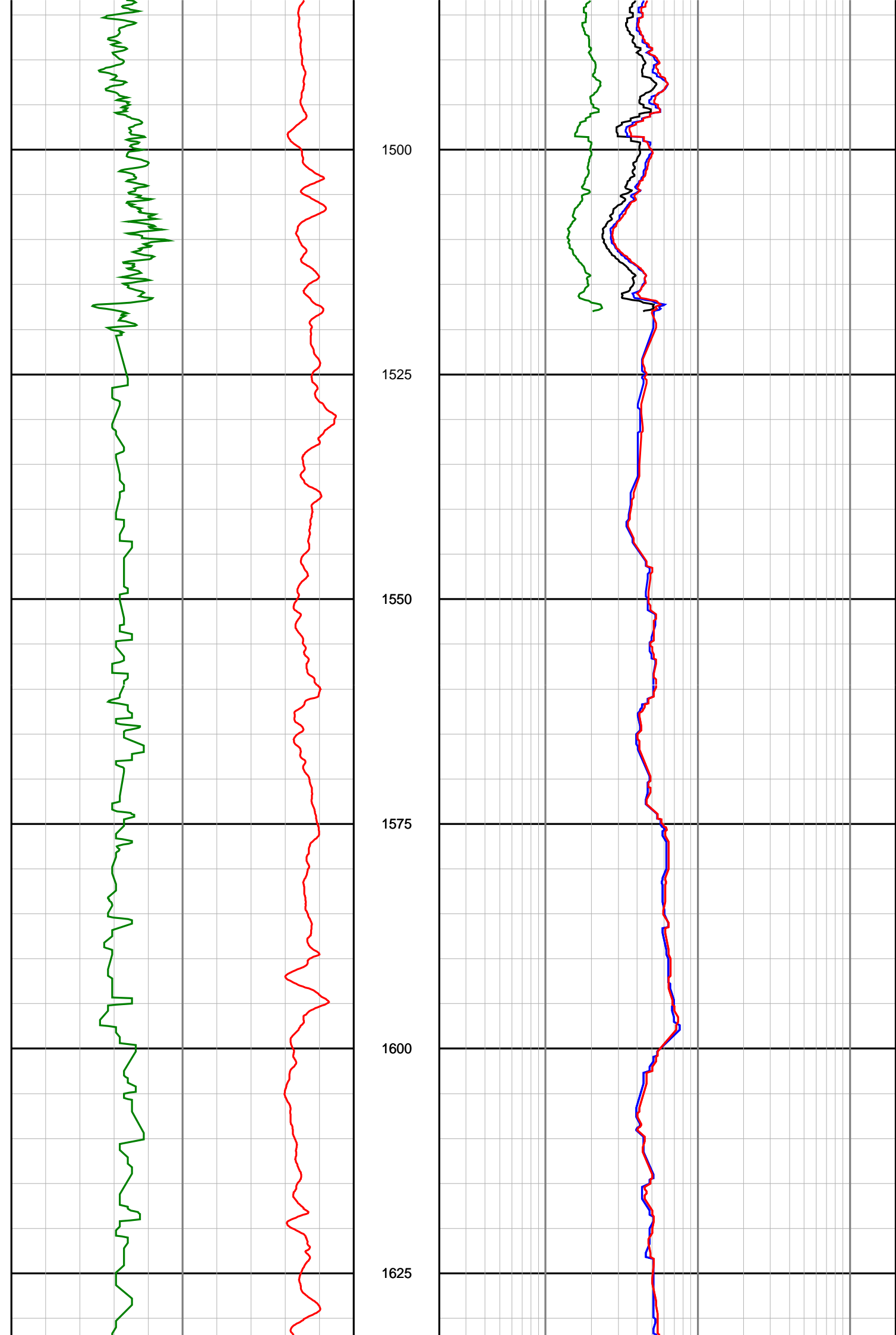
1400

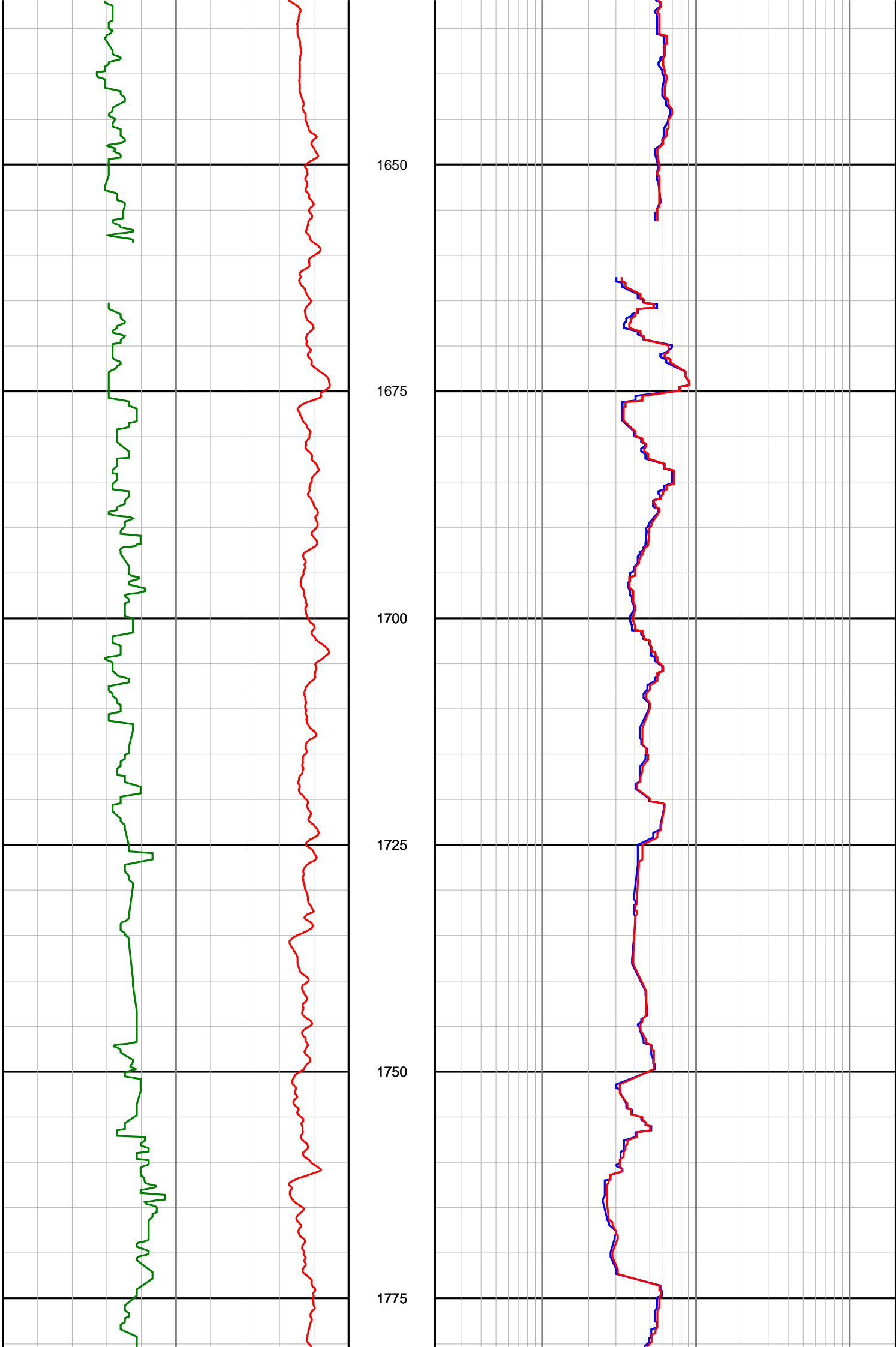
1425

1450

1475









1800

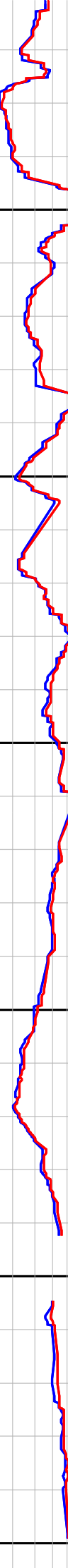
1825

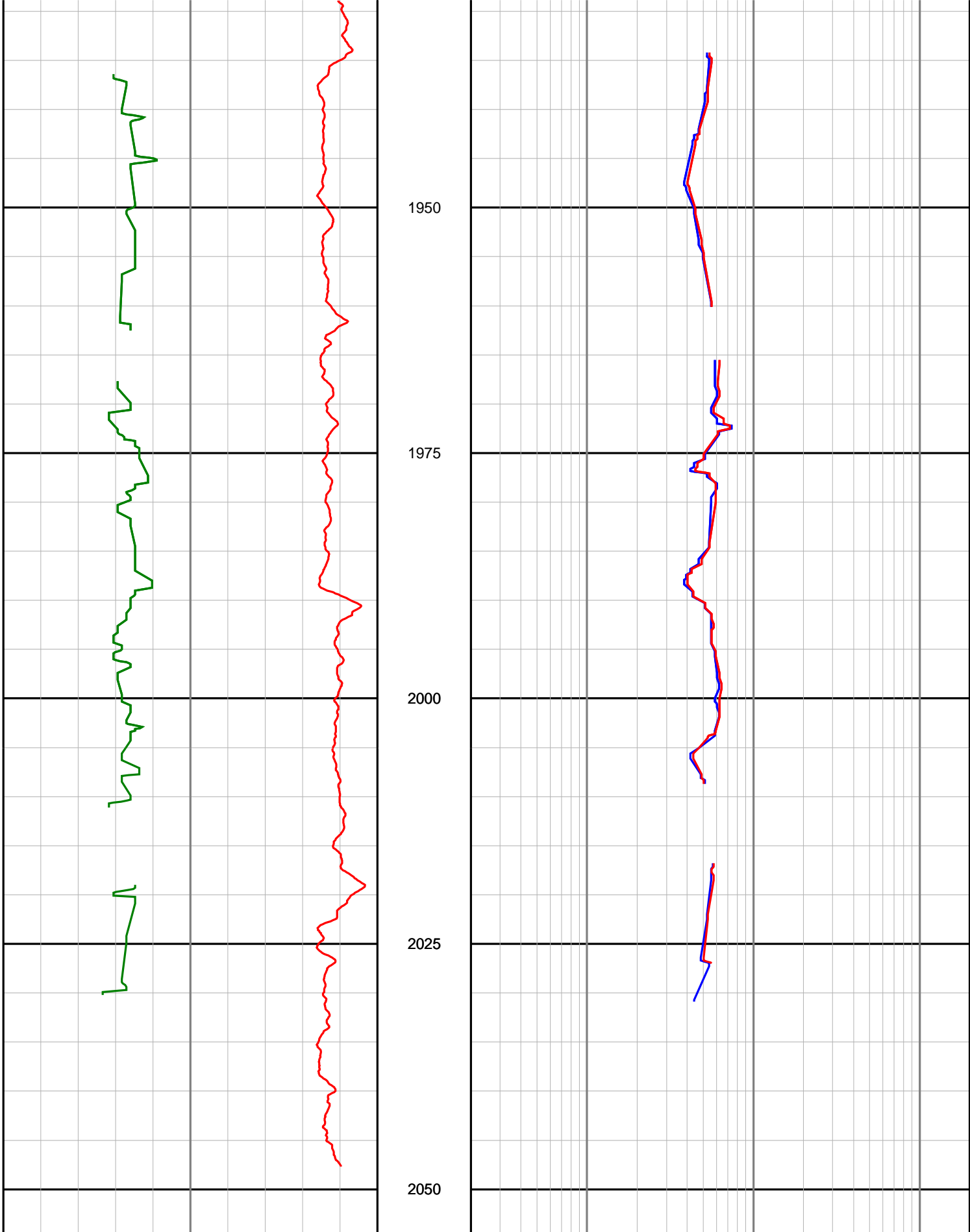
1850

1875

1900

1925





Gamma Ray

(SGRC)

api

0

200

Rate Of Penetration

(SROP)

m/hr

500

0

Depth

MD

1:500

Ext Shallow Phase Res

(SEXP)

ohmm

0.2

200

Shallow Phase Res

(SESP)

ohmm

0.2

200

Medium Phase Res

	0.2	(SEMP) ohmm	200
	0.2	Deep Phase Res (SEDP) ohmm	200